



MONTHLY MEMBERSHIP PROGRESS REPORT

District 105 D

Results as of: 04/30/2019

GMT: JOOST PAIJMANS

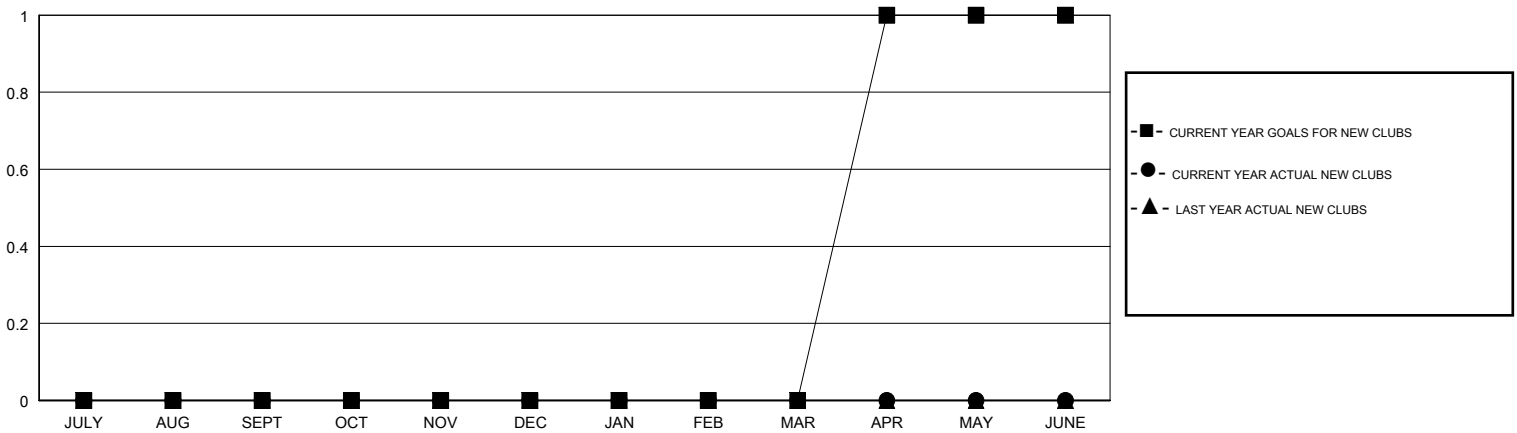
LOCATION ENGLAND

GMT CA

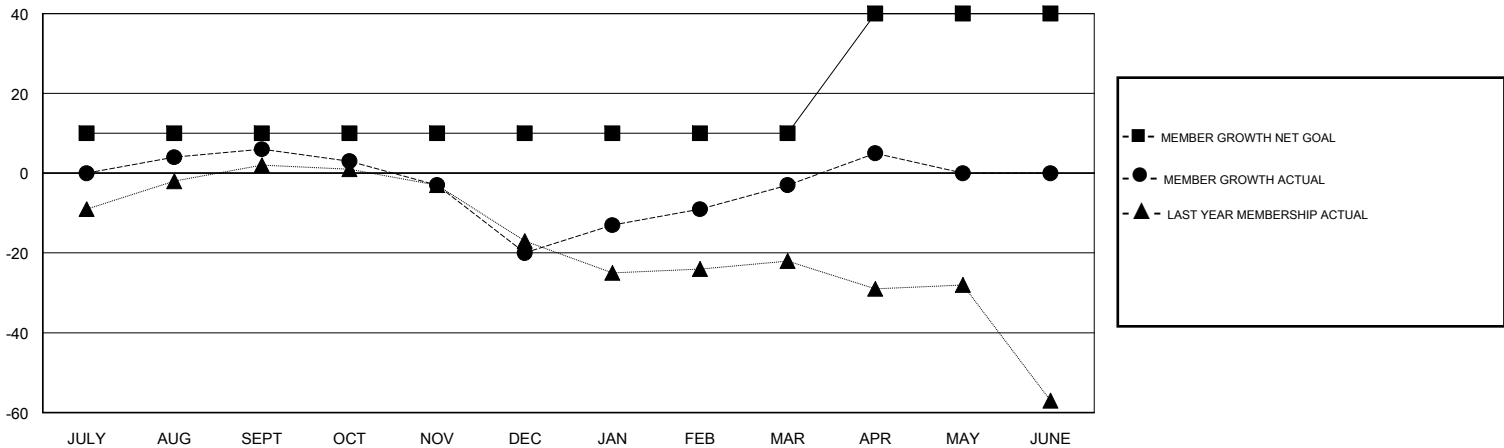
Clubs			
RESULTS FOR 2018-2019			
QUARTER	NEW CLUB GOAL	NEW CLUBS	DROPPED CLUBS
JULY/AUG/SEPT	0	0	0
OCT/NOV/DEC	0	0	1
JAN/FEB/MAR	0	0	0
APR/MAY/JUNE	1	0	0

Members			
RESULTS FOR 2018-2019			
QUARTER	MEMBER GROWTH NET GOAL	MEMBER GROWTH ACTUAL	DROPPED MEMBERS ACTUAL (including transfers)
JULY/AUG/SEPT	10	27	19
OCT/NOV/DEC	0	20	43
JAN/FEB/MAR	0	40	19
APR/MAY/JUNE	30	10	2

GOALS AND ACTUAL NEW CLUBS CUMULATIVE



GOALS AND ACTUAL MEMBERS CUMULATIVE



DROPPED CLUBS: 1	36 CLUBS OF 56 ADDED 1 OR MORE NEW MEMBERS	<u>GENDER DISTRIBUTION</u> MALE 775 (67.63%) FEMALE 371 (32.37%) Women Percentage Fiscal Year Goal: 38%
DROPPED MEMBERS	CLICK HERE FOR CUMULATIVE MEMBERSHIP DATA	TOTAL FAMILY UNIT MEMBERS 162
DECEASED 8		FAMILY MEMBERS PAYING HALF DUES 82
CLUB CANCELLED 0		
OTHER 75		
TOTAL 83		